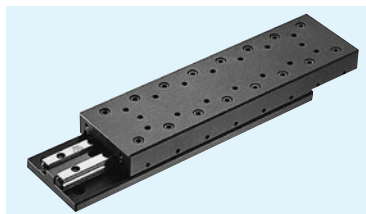
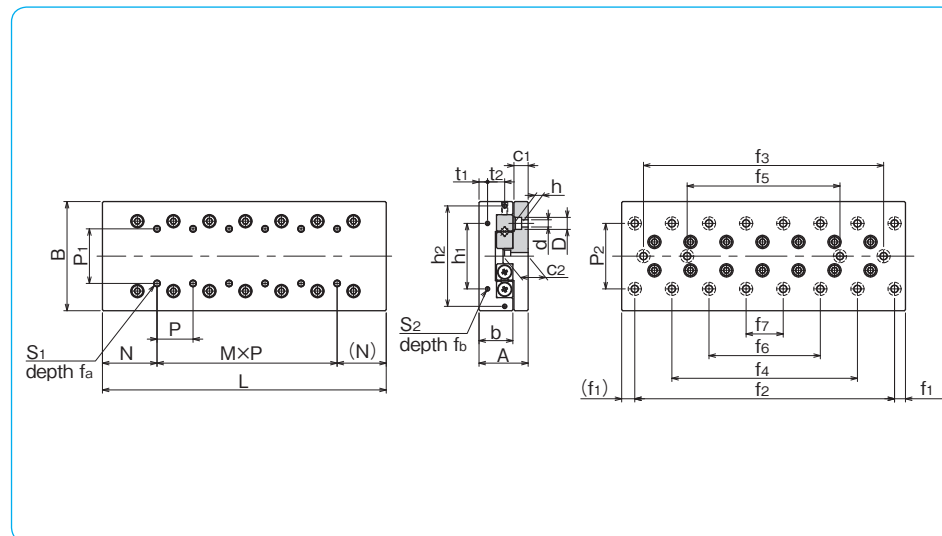
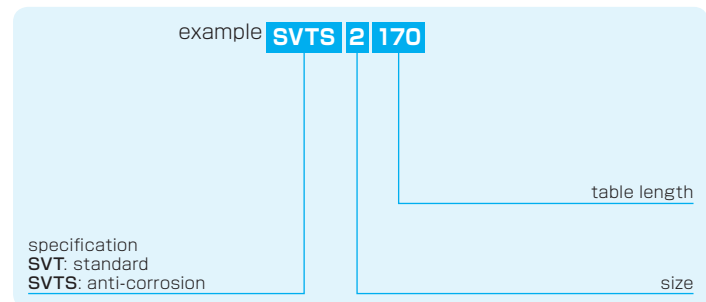


# SVT TYPE

-SVT1/SVT2-



## part number structure

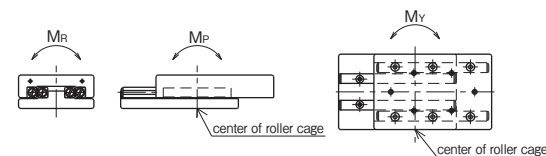


part number		stroke	major dimensions				table-top mounting hole dimensions					table-end mounting hole dimensions					
standard	anti-corrosion	ST mm	A mm	B mm	L mm	b mm	P <sub>1</sub> mm	S <sub>1</sub>	f <sub>a</sub> mm	N mm	M×P mm	h <sub>1</sub> mm	h <sub>2</sub> mm	t <sub>1</sub> mm	t <sub>2</sub> mm	S <sub>2</sub>	f <sub>b</sub> mm
SVT 1025	SVTS 1025	12			25						—						
1035	1035	18			35					1×10							
1045	1045	25			45					2×10							
1055	1055	32	17 <sup>±0.1</sup>	30 <sup>-0.4</sup>	55	11	10	M2	4	12.5	3×10	12	—	2.5	—	M2	6
1065	1065	40			65						4×10						
1075	1075	45			75						5×10						
1085	1085	50			85						6×10						
SVT 2035	SVTS 2035	18			35						—						
2050	2050	30			50						1×15						
2065	2065	40			65						2×15						
2080	2080	50			80						3×15						
2095	2095	60			95						4×15						
2110	2110	70	21 <sup>±0.1</sup>	40 <sup>-0.4</sup>	110	14	15	M3	6	17.5	5×15	16	—	3.4	—	M2	6
2125	2125	80			125						6×15						
2140	2140	90			140						7×15						
2155	2155	100			155						8×15						
2170	2170	110			170						9×15						
2185	2185	120			185						10×15						

bed-surface mounting hole dimensions											accuracy ※(deviation)		basic load rating		allowable load		allowable static moment			mass		size
P <sub>2</sub> mm	d×D×h mm	c <sub>1</sub> mm	c <sub>2</sub> mm	f <sub>1</sub> mm	f <sub>2</sub> mm	f <sub>3</sub> mm	f <sub>4</sub> mm	f <sub>5</sub> mm	f <sub>6</sub> mm	f <sub>7</sub> mm	T μm	S μm	C N	Co N	F N	M <sub>P</sub> N·m	M <sub>Y</sub> N·m	M <sub>R</sub> N·m	SVT g	SVTS g		
22	2.5×4.5×2.5	5.5	9	3.5	18	—	—	—	—	—	2	4	464	476	158	1.79	1.47	3.22	82	36	1025	
					28	—	—	—	—	—	2	4	805	952	316	3.08	3.5	6.45	120	50	1035	
					38	—	—	—	—	—	2	4	959	1,190	396	6.98	6.4	8.06	158	69	1045	
					48	—	28	—	—	—	2	5	1,100	1,420	475	9.53	8.81	9.68	190	83	1055	
					58	—	38	—	—	—	2	5	1,240	1,660	554	12.4	11.6	11.2	225	98	1065	
					68	—	48	—	—	—	2	5	1,510	2,140	712	19.3	18.3	14.5	260	113	1075	
					78	—	58	—	—	—	2	5	1,650	2,380	792	23.4	22.3	16.1	295	128	1085	
					25	—	—	—	—	—	2	4	1,090	1,170	390	7.04	5.78	10.5	195	90	2035	
30	3.5×6.5×3.5	6.5	10.9	5	40	—	—	—	—	—	2	4	1,510	1,750	585	12.1	10.7	15.8	280	133	2050	
					55	—	—	—	—	—	2	5	1,900	2,340	780	19.1	17.1	21.1	370	175	2065	
					70	—	40	—	—	—	2	5	2,620	3,510	1,170	27.4	29.6	31.6	450	220	2080	
					85	—	55	—	—	—	2	5	2,950	4,100	1,360	37.4	39.9	36.9	540	250	2095	
					100	—	70	—	—	—	3	6	3,280	4,680	1,560	61.7	58.1	42.2	630	285	2110	
					115	—	85	—	—	—	3	6	3,590	5,270	1,750	76.1	72.1	47.5	720	330	2125	
					130	—	100	—	70	—	3	6	4,210	6,440	2,140	92	95.9	58.1	800	360	2140	
					145	—	115	—	85	—	3	6	4,500	7,030	2,340	109	113	63.3	880	400	2155	
					160	—	130	—	100	—	3	7	4,790	7,610	2,530	148	143	68.6	970	440	2170	
					175	—	145	—	115	85	3	7	5,080	8,200	2,730	170	164	73.9	1,060	480	2185	

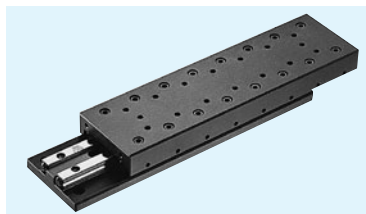
※For accuracy (T, S), refer to Figure G-22 (page G-29).

1N ≅ 0.102kgf 1N·m ≅ 0.102kgf·m

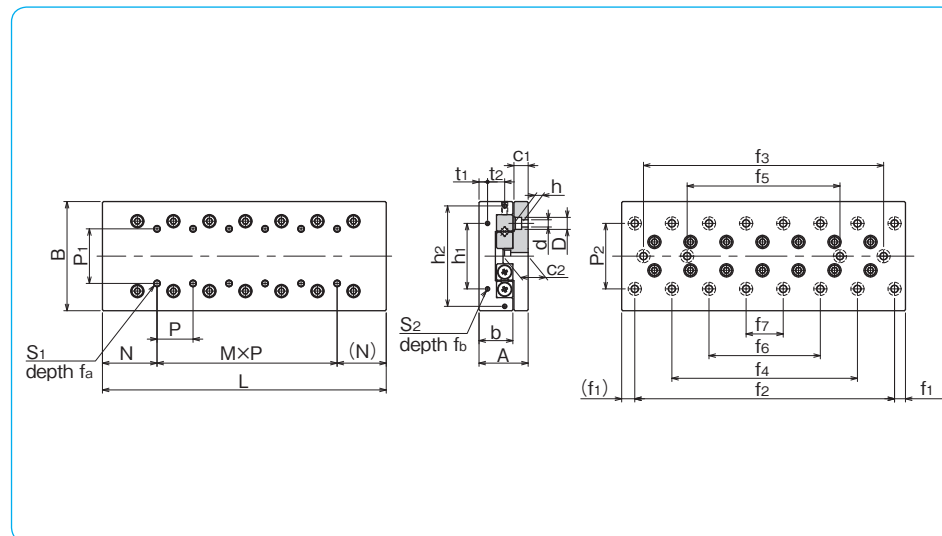
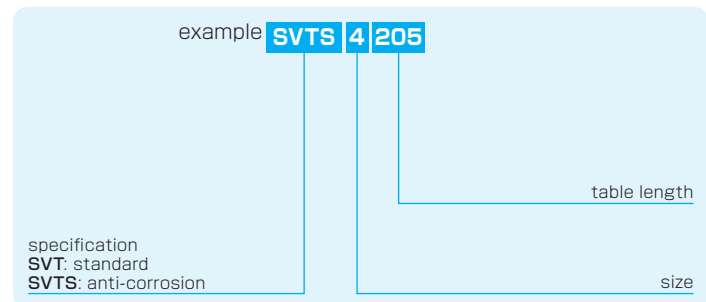


# SVT TYPE

-SVT3/SVT4-



## part number structure

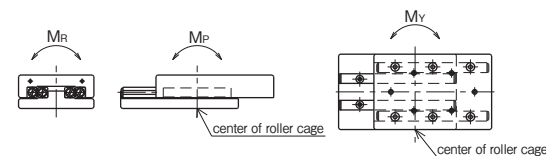


part number		stroke	major dimensions				table-top mounting hole dimensions					table-end mounting hole dimensions					
standard	anti-corrosion	ST mm	A mm	B mm	L mm	b mm	P1 mm	S1	fa mm	N mm	MxP mm	h1 mm	h2 mm	t1 mm	t2 mm	S2	fb mm
<b>SVT 3055</b>	<b>SVTS 3055</b>	30			55						—						
<b>3080</b>	<b>3080</b>	45			80					1x25							
<b>3105</b>	<b>3105</b>	60			105					2x25							
<b>3130</b>	<b>3130</b>	75			130					3x25							
<b>3155</b>	<b>3155</b>	90	28±0.1	60±0.1	155	18.5	25	M4	8	27.5	4x25	40	—	5.5	—	M3	6
<b>3180</b>	<b>3180</b>	105			180						5x25						
<b>3205</b>	<b>3205</b>	130			205						6x25						
<b>3230</b>	<b>3230</b>	155			230						7x25						
<b>3255</b>	<b>3255</b>	180			255						8x25						
<b>3280</b>	<b>3280</b>	205			280						9x25						
<b>3305</b>	<b>3305</b>	230			305						10x25						
<b>SVT 4085</b>	<b>SVTS 4085</b>	50			85						—						
<b>4125</b>	<b>4125</b>	75			125						1x40						
<b>4165</b>	<b>4165</b>	105			165						2x40						
<b>4205</b>	<b>4205</b>	130			205						3x40						
<b>4245</b>	<b>4245</b>	155	35±0.1	80±0.1	245	24	40	M5	10	42.5	4x40	55	—	6.5	—	M3	6
<b>4285</b>	<b>4285</b>	185			285						5x40						
<b>4325</b>	<b>4325</b>	210			325						6x40						
<b>4365</b>	<b>4365</b>	235			365						7x40						
<b>4405</b>	<b>4405</b>	265			405						8x40						

bed-surface mounting hole dimensions											accuracy ※(deviation)		basic load rating		allowable load		allowable static moment			mass		size
P2 mm	dxDxh mm	c1 mm	c2 mm	f1 mm	f2 mm	f3 mm	f4 mm	f5 mm	f6 mm	f7 mm	T μm	S μm	C N	Co N	F N	MP N·m	MY N·m	MR N·m	SVT g	SVTS g	size	
40	4.5x8x4.5	9	15	10	35	—	—	—	—	—	2	5	3,490	3,890	1,290	19.4	22.2	54.5	640	300	<b>3055</b>	
					60	—	—	—	—	—	2	5	5,230	6,490	2,160	53.0	58.0	90.9	95.5	440	<b>3080</b>	
					85	—	—	—	—	—	3	6	6,030	7,780	2,590	103	95.7	109	1,250	580	<b>3105</b>	
					110	—	—	—	—	—	3	6	7,560	10,300	3,450	170	160	145	1,570	715	<b>3130</b>	
					135	85	—	—	—	—	3	6	9,000	12,900	4,320	210	220	181	1,850	850	<b>3155</b>	
					160	110	—	—	—	—	3	7	10,300	15,500	5,180	302	314	218	2,150	990	<b>3180</b>	
					185	135	85	—	—	—	3	7	11,000	16,800	5,610	355	367	236	2,450	1,130	<b>3205</b>	
					210	160	110	—	—	—	3	7	11,700	18,100	6,040	472	455	254	2,740	1,270	<b>3230</b>	
					235	185	135	—	—	—	3	7	12,900	20,700	6,910	537	552	290	3,040	1,410	<b>3255</b>	
					260	210	160	110	—	—	3	7	13,600	22,000	7,340	606	622	309	3,360	1,540	<b>3280</b>	
285	235	185	135	—	—	3	7	14,200	23,300	7,770	757	735	372	3,660	1,680	<b>3305</b>						
55	5.5x10x5.4	10.5	18	10	65	—	—	—	—	—	2	5	7,110	7,920	2,640	96.0	84.9	159	1,700	780	<b>4085</b>	
					105	—	—	—	—	—	3	6	10,600	13,200	4,400	217	199	265	2,500	1,140	<b>4125</b>	
					145	—	—	—	—	—	3	7	13,800	18,400	6,160	296	316	371	3,300	1,510	<b>4165</b>	
					185	105	—	—	—	—	3	7	16,800	23,700	7,920	488	513	477	4,100	1,870	<b>4205</b>	
					225	145	—	—	—	—	3	7	19,700	29,000	9,680	729	759	584	4,900	2,240	<b>4245</b>	
					265	185	—	—	—	—	3	7	22,400	34,300	11,400	1,010	1,050	690	5,700	2,600	<b>4285</b>	
					305	225	145	—	—	—	4	8	25,100	39,600	13,200	1,350	1,390	796	6,500	3,000	<b>4325</b>	
					345	265	185	—	—	—	4	8	27,600	44,800	14,900	1,730	1,780	902	7,300	3,300	<b>4365</b>	
					385	305	225	—	—	—	4	8	28,900	47,500	15,800	2,160	2,100	955	8,100	3,700	<b>4405</b>	

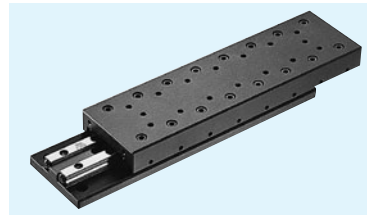
※For accuracy (T, S), refer to Figure G-22 (page G-29).

1N ≒ 0.102kgf 1N · m ≒ 0.102kgf · m

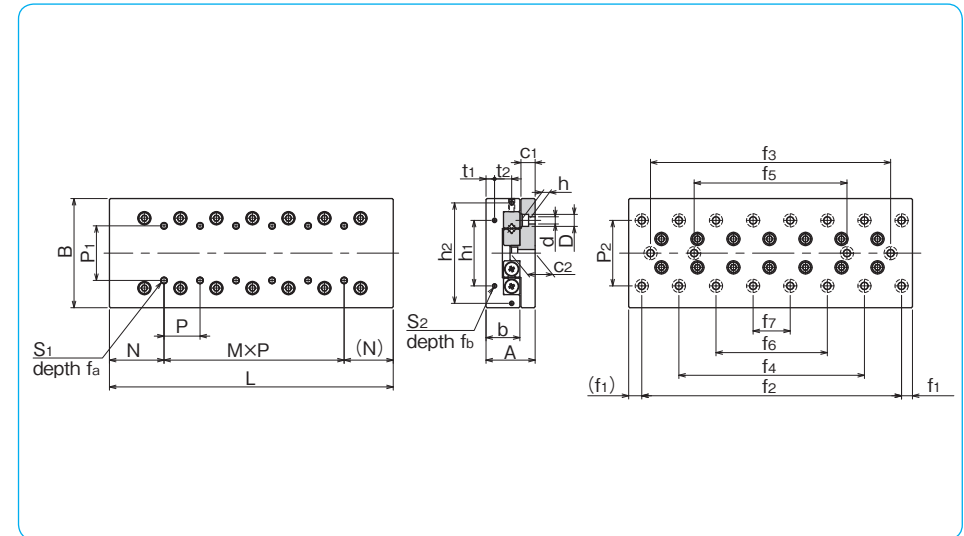
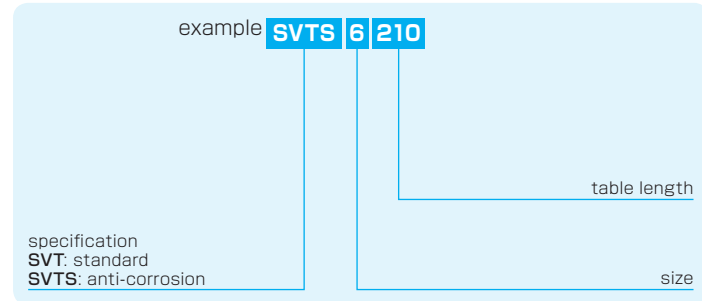


# SVT TYPE

-SVT6/SVT9-



## part number structure



part number		stroke ST mm	major dimensions				table-top mounting hole dimensions					table-end mounting hole dimensions					
standard	anti-corrosion		A mm	B mm	L mm	b mm	P <sub>1</sub> mm	S <sub>1</sub> mm	f <sub>a</sub> mm	N mm	M×P mm	h <sub>1</sub> mm	h <sub>2</sub> mm	t <sub>1</sub> mm	t <sub>2</sub> mm	S <sub>2</sub> mm	f <sub>b</sub> mm
<b>SVT 6110</b>	<b>SVTS 6110</b>	60			110					—							
<b>6160</b>	<b>6160</b>	95			160					1×50							
<b>6210</b>	<b>6210</b>	130			210					2×50							
<b>6260</b>	<b>6260</b>	165			260					3×50							
<b>6310</b>	<b>6310</b>	200	45 <sup>±0.1</sup>	100 <sup>±0.1</sup>	310	31	50	M6	12	55	4×50	60	92	8	15	M4	8
<b>6360</b>	<b>6360</b>	235			360					5×50							
<b>6410</b>	<b>6410</b>	265			410					6×50							
<b>6460</b>	<b>6460</b>	300			460					7×50							
<b>6510</b>	<b>6510</b>	335			510					8×50							
<b>SVT 9210</b>	—	130			210					—							
<b>9310</b>	—	180			310					1×100							
<b>9410</b>	—	350			410					2×100							
<b>9510</b>	—	450			510					3×100							
<b>9610</b>	—	550	60 <sup>±0.1</sup>	145 <sup>±0.1</sup>	610	43	85	M8	16	105	4×100	90	135	11	20	M4	8
<b>9710</b>	—	650			710					5×100							
<b>9810</b>	—	750			810					6×100							
<b>9910</b>	—	850			910					7×100							
<b>91010</b>	—	950			1,010					8×100							

bed-surface mounting hole dimensions											accuracy ※(deviation)		basic load rating		allowable load		allowable static moment			mass		size
P <sub>2</sub> mm	d×D×h mm	c <sub>1</sub> mm	c <sub>2</sub> mm	f <sub>1</sub> mm	f <sub>2</sub> mm	f <sub>3</sub> mm	f <sub>4</sub> mm	f <sub>5</sub> mm	f <sub>6</sub> mm	f <sub>7</sub> mm	T μm	S μm	C N	Co N	F N	M <sub>P</sub> N·m	M <sub>Y</sub> N·m	M <sub>R</sub> N·m	SVT g	SVTS g		
60	7×11.5×7	13	23	10	90	—	—	—	—	—	3	6	16,500	17,700	5,910	260	230	400	3,280	1,705	<b>6110</b>	
					140	—	—	—	—	—	3	6	24,700	29,600	9,860	588	539	666	4,820	2,480	<b>6160</b>	
					190	90	—	—	—	—	3	7	32,200	41,400	13,800	1,040	978	933	6,270	3,255	<b>6210</b>	
					240	140	—	—	—	—	3	7	39,200	53,200	17,700	1,630	1,540	1,200	7,740	4,030	<b>6260</b>	
					290	190	—	—	—	—	3	7	45,800	65,100	21,600	2,340	2,240	1,460	9,200	4,805	<b>6310</b>	
					340	240	140	—	—	—	4	8	52,200	76,900	25,600	2,750	2,850	1,730	10,740	5,580	<b>6360</b>	
					390	290	190	—	—	—	4	8	58,400	88,800	29,500	3,660	3,770	2,000	12,190	6,355	<b>6410</b>	
					440	340	240	—	—	—	4	8	64,400	100,000	33,500	4,700	4,830	2,260	13,800	7,130	<b>6460</b>	
					490	390	290	190	—	—	4	8	70,200	112,000	37,400	5,870	6,010	2,530	15,300	7,905	<b>6510</b>	
					90	9×14×9	16	29	55	100	—	—	—	—	—	3	7	51,100	56,500	18,800	1,610	1,440
200	—	—	—	—						—	3	7	79,300	98,900	32,900	3,150	3,360	3,560	17,950	—	<b>9310</b>	
300	100	—	—	—						—	4	8	79,300	98,900	32,900	4,110	3,840	3,560	23,950	—	<b>9410</b>	
400	200	—	—	—						—	4	8	96,600	127,000	42,300	6,420	6,080	4,580	30,090	—	<b>9510</b>	
500	300	100	—	—						—	4	9	112,000	155,000	51,700	7,760	8,090	5,600	35,990	—	<b>9610</b>	
600	400	200	—	—						—	4	9	128,000	183,000	61,100	10,800	11,200	6,620	41,890	—	<b>9710</b>	
700	500	300	100	—						—	5	10	136,000	197,000	65,800	14,400	13,900	7,130	47,790	—	<b>9810</b>	
800	600	400	200	—						—	5	10	151,000	226,000	75,200	18,500	17,900	8,140	53,690	—	<b>9910</b>	
900	700	500	300	100						—	5	10	165,000	254,000	84,600	23,100	22,400	9,160	59,590	—	<b>91010</b>	

※For accuracy (T, S), refer to Figure G-22 (page G-29).

1N ≅ 0.102kgf 1N · m ≅ 0.102kgf · m

