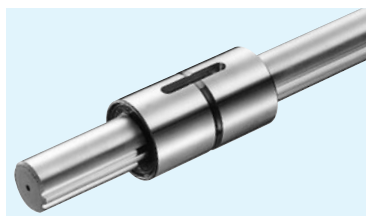


SSP TYPE

— Cylindrical Spline Nut —



part number structure

example **SSP 80 L-2-T1-600-P/CU**

specification
SSP: standard
SSPS: anti-corrosion

nominal diameter

nut length
blank: standard
L: long

number of nuts attached to one shaft

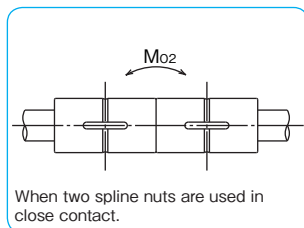
Note: retainer material is resin.

with special specification

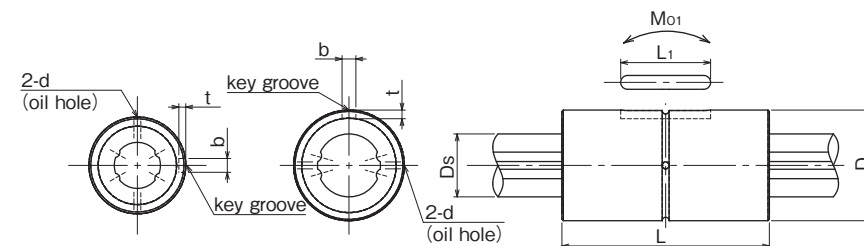
accuracy grade
blank: high
P: precision

spline shaft total length

preload symbol
blank: standard
T1: light
T2: medium



When two spline nuts are used in close contact.



SSP4~10 SSP13A~100AL
 ※SSP4 spline nut does not come with any oil hole.

| part number | | major dimensions | | | | | | | | | | |
|-------------|----------------|------------------|----------------------|---------|----------------------|---------|----------------------|---------|----------------------|----------------------|---------|--|
| standard | anti-corrosion | D mm | D tolerance μm | L mm | L tolerance mm | b mm | b tolerance μm | t mm | t tolerance mm | L ₁ mm | d mm | |
| SSP 4 | SSPS 4 | 10 | 0/-9 | 16 | | 2 | | 1.2 | | 6 | — | |
| SSP 6 | SSPS 6 | 14 | 0 | 25 | | 2.5 | +14 | 1.2 | | 10.5 | 1 | |
| SSP 8 | SSPS 8 | 16 | -11 | 25 | 0 | 2.5 | 0 | 1.2 | | 10.5 | 1.5 | |
| SSP 10 | SSPS10 | 21 | 0 | 33 | -0.2 | 3 | | 1.5 | | 13 | 1.5 | |
| SSP 13A | SSPS13A | 24 | -13 | 36 | | 3 | | 1.5 | | 15 | 1.5 | |
| SSP 16A | SSPS16A | 31 | | 50 | | 3.5 | | 2 | +0.05 | 17.5 | 2 | |
| SSP 20A | SSPS20A | 35 | 0 | 63 | | 4 | +18 | 2.5 | 0 | 29 | 2 | |
| SSP 25A | SSPS25A | 42 | -16 | 71 | | 4 | 0 | 2.5 | | 36 | 3 | |
| SSP 30A | — | 47 | | 80 | 0 | 4 | | 2.5 | | 42 | 3 | |
| SSP 40A | — | 64 | 0 | 100 | -0.3 | 6 | | 3.5 | | 52 | 4 | |
| SSP 50A | — | 80 | -19 | 125 | | 8 | +22/0 | 4 | | 58 | 4 | |
| SSP 60A | — | 90 | | 140 | | 12 | +27 | 5 | | 67 | 4 | |
| SSP 80A | — | 120 | -22 | 160 | | 16 | 0 | 6 | | 76 | 5 | |
| SSP 80AL | — | 120 | | 217 | 0 | | | | +0.1 | 110 | | |
| SSP100A | — | 150 | 0 | 185 | -0.4 | 20 | +33 | 7 | 0 | 110 | 5 | |
| SSP100AL | — | 150 | -25 | 248 | | | 0 | | | 160 | 5 | |
| SSP 20 | SSPS20 | 32 | 0 | 60 | 0/-0.2 | 4 | +18 | 2.5 | | 26 | 2 | |
| SSP 25 | SSPS25 | 37 | -16 | 70 | | 5 | 0 | 3 | | 33 | 3 | |
| SSP 30 | — | 45 | | 80 | 0 | 7 | +22 | 4 | +0.05 | 41 | 3 | |
| SSP 40 | — | 60 | 0 | 100 | -0.3 | 10 | 0 | 4.5 | 0 | 55 | 4 | |
| SSP 50 | — | 75 | -19 | 112 | | 15 | +27 | 5 | | 60 | 4 | |
| SSP 60 | — | 90 | 0/-22 | 127 | | 18 | 0 | 6 | | 68 | 4 | |

SSP type spline nut comes with a key (refer to page B-14).

| Ds mm | Ds tolerance μm | basic torque rating | | basic load rating | | allowable static moment | | mass | | size |
|----------|-----------------------|----------------------------------|----------------------------------|--------------------|--------------------------------|-------------------------|------------------------|-----------|---------------|-------|
| | | dynamic C _T N·m | static C _{0T} N·m | dynamic C kN | static C ₀ kN | Mo ₁ N·m | Mo ₂ N·m | nut kg | shaft kg/m | |
| 4 | 0 | 0.74 | 1.05 | 0.86 | 1.22 | 1.97 | 10.3 | 0.0065 | 0.10 | 4 |
| 6 | -12 | 1.5 | 2.4 | 1.22 | 2.28 | 5.1 | 40 | 0.019 | 0.21 | 6 |
| 8 | 0 | 2.1 | 3.7 | 1.45 | 2.87 | 7.4 | 50 | 0.023 | 0.38 | 8 |
| 10 | -15 | 4.4 | 8.2 | 2.73 | 5.07 | 18.0 | 116 | 0.054 | 0.60 | 10 |
| 13 | 0 | 21 | 39.2 | 2.67 | 4.89 | 13.7 | 109 | 0.07 | 1.0 | 13A |
| 16 | -18 | 60 | 110 | 6.12 | 11.2 | 46 | 299 | 0.15 | 1.5 | 16A |
| 20 | 0 | 105 | 194 | 8.9 | 16.3 | 110 | 560 | 0.22 | 2.4 | 20A |
| 25 | -21 | 189 | 346 | 12.8 | 23.4 | 171 | 1,020 | 0.33 | 3.7 | 25A |
| 30 | 0 | 307 | 439 | 18.6 | 23.2 | 181 | 1,470 | 0.36 | 5.38 | 30A |
| 40 | 0 | 674 | 934 | 30.8 | 37.5 | 358 | 2,940 | 0.95 | 9.55 | 40A |
| 50 | -25 | 1,290 | 2,950 | 40.3 | 64.9 | 690 | 4,080 | 1.9 | 15.0 | 50A |
| 60 | 0 | 1,570 | 3,420 | 47.7 | 79.5 | 881 | 5,470 | 2.3 | 21.6 | 60A |
| 80 | -30 | 4,500 | 6,460 | 92.8 | 108 | 1,990 | 10,500 | 6.4 | 39 | 80A |
| | | 5,980 | 9,690 | 123 | 162 | 4,310 | 20,980 | 9.1 | | 80AL |
| 100 | 0 | 9,180 | 12,000 | 151 | 160 | 3,350 | 18,200 | 11.2 | 61 | 100A |
| | -35 | 12,100 | 18,000 | 200 | 240 | 7,210 | 35,600 | 15.8 | | 100AL |
| 18.2 | 0 | 83 | 133 | 7.84 | 11.3 | 63 | 500 | 0.2 | 2.0 | 20 |
| 23 | -21 | 162 | 239 | 12.3 | 16.1 | 104 | 830 | 0.22 | 3.1 | 25 |
| 28 | 0 | 289 | 412 | 18.6 | 23.2 | 181 | 1,470 | 0.35 | 4.8 | 30 |
| 37.4 | 0 | 637 | 882 | 30.8 | 37.5 | 358 | 2,940 | 0.81 | 8.6 | 40 |
| 47 | -25 | 1,390 | 3,180 | 46.1 | 74.2 | 696 | 4,400 | 1.5 | 13.1 | 50 |
| 56.5 | 0/-30 | 2,100 | 4,800 | 58.0 | 127 | 1,300 | 8,800 | 2.5 | 19 | 60 |

1kN≒102kgf 1N·m≒0.102kgf·m