

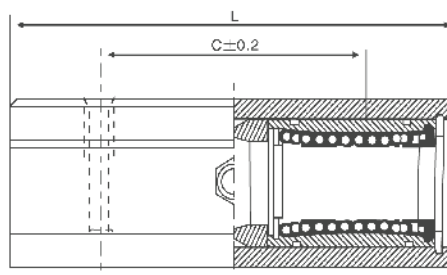
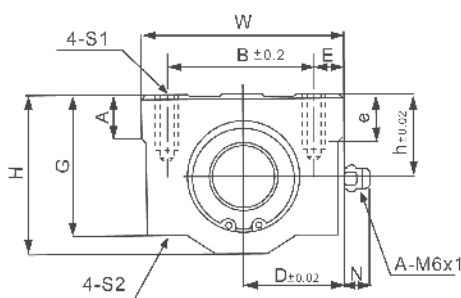


SCE-W SERIES

LONG HOUSED LINEAR BEARINGS

FEATURES

- Long type for increased rigidity
- Highly rigid aluminium housing
- European standard interchangeability
- Self-aligning
- Low friction
- Double rubber seal for corrosion resistance
- Easy mounting
- Low maintenance



Type	Shaft Ø	h	D	W	L	H	G	A	B	C	E	S1xe	S2	Weight	Load Ratings (N)	
	(mm)													(g)	C	Co
SCE10WUU	10	13	20	40	68	26	21	8	28	46	6	M5x12	4,3	180	410	800
SCE12WUU	12	15	22	44	77	30	24,5	8	33	64	5,5	M5x12	4,3	237	650	1180
SCE16WUU	16	19	25	50	89	38,5	32,5	9	36	79	7	M5x12	4,3	405	1230	2340
SCE20WUU	20	21	27	54	100	41	35	11	40	90	7	M6x12	5,2	510	1370	2740
SCE25WUU	25	26	38	76	136	51,5	42	12	54	119	11	M8x18	7	1220	1560	3120
SCE30WUU	30	30	39	78	154	59,5	49	15	58	132	10	M8x18	7	1580	2490	5480
SCE40WUU	40	40	51	102	180	78	62	20	80	150	11	M10x25	8,7	3180	3440	8020
SCE50WUU	50	52	61	122	230	102	80	25	100	200	11	M10x25	8,7	6990	6110	15860

